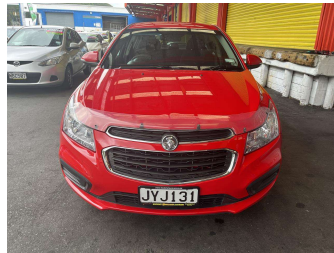


2016 Holden Cruze EQUIPE 1.8P/6AT/HA/5



Purchase Price **\$11,995**

Includes GST, Registration & Licensing Note: A Clean Car fee/rebate does not apply to this vehicle

Finance may be available on this vehicle. Ask one of our friendly staff for more information.

Gain peace of mind with Mechanical Breakdown Insurance. **Ask us how.**

Top features

None Listed

Body Style
5 door, Hatchback

Odometer
115,871 km

Engine
1796 cc

Fuel Type
Petrol


Transmission
Automatic, Front Wheel

Wheels
-

VIN
6G1PD6EM9GL212983

Interior
-

Safety



Based on 2023 UCSR rating for 09-16 models

Reg No.
JYJ131

Ext Colour
Red

History
NZ New

Seats
5 seats

CO2 Emissions
★ ★ ★ ☆ ☆ ☆
198 grams/km

Energy Economy
★ ★ ☆ ☆ ☆ ☆
Annual fuel cost of \$3,210
8.2L per 100km

Cost per year is an estimate based on petrol price of \$2.80 per litre and an average distance of 14000 km. Emissions and Energy Economy figures standardised to 3P WLTP.

Stock ID: 24093

