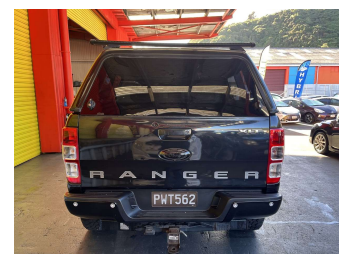
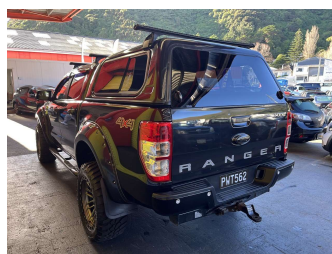
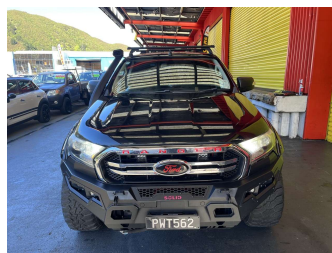


# 2015 Ford Ranger XLT DOUBLE CAB W/S 3



Purchase Price **\$31,995**  
Includes GST, Registration & Licensing

Finance may be available on this vehicle. Ask one of our friendly staff for more information.

Gain peace of mind with Mechanical Breakdown Insurance. **Ask us how.**

- Top features**
- » 4WD/4x4
  - » Air Bag(s)
  - » Alloy Wheels
  - » Body Kit (Factory)
  - » Canopy
  - » EFI
  - » Electric Windows
  - » Power Steering
  - » Radio
  - » Reversing Camera
  - » Roof Rack
  - » Running Boards
  - » Snorkel
  - » Steering wheel control...
  - » Tints
  - » Tow Bar
  - » Tuf Dek
  - » Turbo Charger

Body Style  
**4 door, Ute**

Odometer  
**210,605 km**

Engine  
**3198 cc, Internal Combustion**

Fuel Type  
**Diesel**

Transmission  
**Manual, 4WD**

Wheels  
-

VIN  
**MNAUMFF50FW491724**

Interior  
**Charcoal, Cloth**

Safety



Based on 2025 VSRR rating

Reg No.  
**PWT562**

Ext Colour  
**Black**

History  
**NZ New**

Seats  
**5 seats**

CO2 Emissions  
**★ ★ ☆ ☆ ☆ ☆**  
**252 grams/km**

Energy Economy  
**★ ★ ☆ ☆ ☆ ☆**

**Annual fuel cost of \$3,720**  
**9.5L per 100km**

Cost per year is an estimate based on diesel price of \$2.00 per litre and an average distance of 14000 km. Includes Road User Charges (RUC). Emissions and Energy Economy figures standardised to 3P WLTP.

**Stock ID: 30415**



Trade In Clearance | Phone 04 566 6484 | Email sales@tradeinclearance.co.nz  
125-127 Gracefield Road, Lower Hutt 5010, New Zealand  
www.tradeinclearance.co.nz