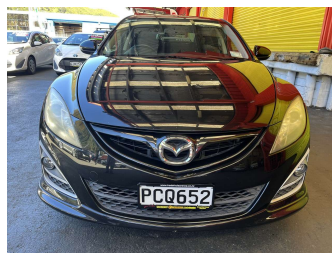


2011 Mazda Atenza 2.5L Sporty



Purchase Price **\$11,995**
Includes GST, Registration & Licensing

Finance may be available on this vehicle. Ask one of our friendly staff for more information.

Gain peace of mind with Mechanical Breakdown Insurance. **Ask us how.**

- Top features**
- » ABS Brakes
 - » Air Bag(s)
 - » Alloy Wheels
 - » Body Kit (Factory)
 - » Electric Windows
 - » Fog Lights
 - » Paddle Shift
 - » Power Steering
 - » Radio
 - » Spoiler
 - » Steering wheel control...
 - » Tints

Body Style
5 door, Hatchback

Odometer
126,595 km

Engine
2480 cc, Internal Combustion


Fuel Type
Petrol

Transmission
Automatic, Front Wheel

Wheels
-

VIN
7AT0C139X22201219

Interior
Black, Cloth

Safety

Based on 2025 UCSR rating for 08-11 models

Reg No.
PCQ652

Ext Colour
Black

History
Ex-Overseas

Seats
5 seats

CO2 Emissions
★ ★ ★ ☆ ☆ ☆
215 grams/km

Energy Economy
★ ☆ ☆ ☆ ☆ ☆
Annual fuel cost of \$3,530
9L per 100km

Cost per year is an estimate based on petrol price of \$2.80 per litre and an average distance of 14000 km. Emissions and Energy Economy figures standardised to 3P WLTP.

Stock ID: 30093



Trade In Clearance | Phone 04 566 6484 | Email sales@tradeinclearance.co.nz
125-127 Gracefield Road, Lower Hutt 5010, New Zealand
www.tradeinclearance.co.nz