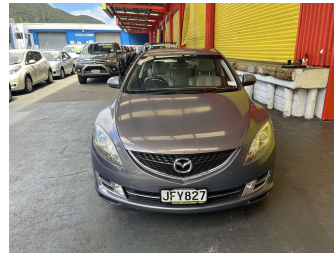


# 2008 Mazda Atenza 2.0L Petrol



Purchase Price

**\$7,995**

Includes GST, Registration & Licensing

Finance may be available on this vehicle. Ask one of our friendly staff for more information.

Gain peace of mind with Mechanical Breakdown Insurance. **Ask us how.**

## Top features

- » ABS Brakes
- » Air Bag(s)
- » Body Kit (Factory)
- » EFI
- » Electric Windows
- » Fog Lights
- » Heated Seats
- » Power Steering
- » Radio
- » Steering wheel control...
- » Wheel Covers

Body Style

**4 door, Sedan**

Odometer

**186,239 km**

Engine

**1990 cc, Internal Combustion**

Fuel Type

**Petrol**

Transmission

**Automatic, Front Wheel**

Wheels

-

VIN

**7AT0C139X15100352**

Interior

**Beige, Leather**

Safety



Based on 2025 UCSR rating for 08-11 models

Reg No.

**JFY827**

Ext Colour

**Grey**

History

**Ex-Overseas**

Seats

**5 seats**

CO2 Emissions

★★★★☆☆

**197 grams/km**

Energy Economy

★★★★☆☆

**Annual fuel cost of \$3,210  
8.2L per 100km**

Cost per year is an estimate based on petrol price of \$2.80 per litre and an average distance of 14000 km. Emissions and Energy Economy figures standardised to 3P WLTP.

**Stock ID: 29607**



Trade In Clearance | Phone 04 566 6484 | Email sales@tradeinclearance.co.nz  
125-127 Gracefield Road, Lower Hutt 5010, New Zealand  
www.tradeinclearance.co.nz