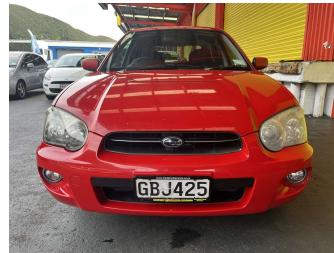


# 2005 Subaru Impreza 1.5P Manual



Purchase Price

**\$8,995**

Includes GST, Registration & Licensing

Finance may be available on this vehicle. Ask one of our friendly staff for more information.

Gain peace of mind with Mechanical Breakdown Insurance. **Ask us how.**

## Top features

- » ABS Brakes
- » Air Bag(s)
- » Alloy Wheels
- » Body Kit (Factory)
- » EFI
- » Electric Windows
- » Fog Lights
- » Power Steering
- » Radio
- » Rear Wiper
- » Roof Spoiler
- » Tints
- » Tow Bar

Body Style

**5 door, Hatchback**

Odometer

**188,090 km**

Engine

**1490 cc, Internal Combustion**

Fuel Type

**Petrol**

Transmission

**Manual, Front Wheel**

Wheels

-

VIN

**7A8GF090707037138**

Interior

**Charcoal, Cloth**

Safety



Based on 2025 UCSR rating for 01-07 models

Reg No.

**GBJ425**

Ext Colour

**Red**

History

**Ex-Overseas**

Seats

**5 seats**

CO2 Emissions

★★★★☆

**181 grams/km**

Energy Economy

★★☆☆☆

**Annual fuel cost of \$2,940  
7.5L per 100km**

Cost per year is an estimate based on petrol price of \$2.80 per litre and an average distance of 14000 km. Emissions and Energy Economy figures standardised to 3P WLTP.

**Stock ID: 29910**



Trade In Clearance | Phone 04 566 6484 | Email sales@tradeinclearance.co.nz  
125-127 Gracefield Road, Lower Hutt 5010, New Zealand  
www.tradeinclearance.co.nz