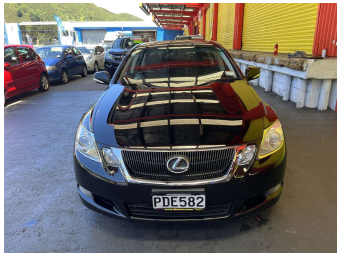


2009 Lexus Gs350 V6 Power



Purchase Price

Includes GST, Registration & Licensing

\$8,995

Finance may be available on this vehicle. Ask one of our friendly staff for more information.

Gain peace of mind with Mechanical Breakdown Insurance. **Ask us how.**

Top features

- » ABS Brakes
- » Air Bag(s)
- » Air Conditioning
- » Alloy Wheels
- » Body Kit (Factory)
- » EFI
- » Electric Windows
- » Fog Lights
- » Power Steering
- » Push Start Button
- » Radio
- » Recaros
- » Smart key
- » Steering wheel control...

Body Style

4 door, Sedan

Odometer

145,891 km

Engine

3456 cc, Internal Combustion

Fuel Type

Petrol

Transmission

Automatic, Rear Wheel

Wheels

-

VIN

7AT0B00RX22034685

Interior

Black, Leather

Safety



Based on 2024 VSRR rating

Reg No.

PDE582

Ext Colour

Black

History

Ex-Overseas

Seats

5 seats

CO2 Emissions

★☆☆☆☆

264 grams/km

Energy Economy

★☆☆☆☆

**Annual fuel cost of \$4,310
11L per 100km**

Cost per year is an estimate based on petrol price of \$2.80 per litre and an average distance of 14000 km. Emissions and Energy Economy figures standardised to 3P WLTP.

Stock ID: 29475



Trade In Clearance | Phone 04 566 6484 | Email sales@tradeinclearance.co.nz
125-127 Gracefield Road, Lower Hutt 5010, New Zealand
www.tradeinclearance.co.nz