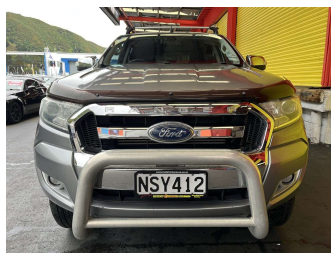


2016 Ford Ranger XLT DOUBLE CAB W/S A



Purchase Price **\$19,995**
Includes GST, Registration & Licensing

Finance may be available on this vehicle. Ask one of our friendly staff for more information.

Gain peace of mind with Mechanical Breakdown Insurance. **Ask us how.**

- Top features**
- » ABS Brakes
 - » Air Bag(s)
 - » Alloy Wheels
 - » Body Kit (Factory)
 - » Bullbar
 - » Canopy
 - » EFI
 - » Electric Windows
 - » Parking Sensors
 - » Power Steering
 - » Radio
 - » Reversing Camera
 - » Roof Rack
 - » Running Boards
 - » Steering wheel control...
 - » Tints
 - » Tuf Dek
 - » Turbo Charger

Body Style
4 door, Ute

Odometer
246,021 km

Engine
3198 cc, Internal Combustion


Fuel Type
Diesel

Transmission
Automatic, Rear Wheel

Wheels
-

VIN
MNAUMFF50GW588909

Interior
Charcoal, Cloth

Safety

Based on 2025 VSRR rating

Reg No.
NSY412

Ext Colour
Grey

History
NZ New

Seats
5 seats

CO2 Emissions
★ ★ ☆ ☆ ☆ ☆
257 grams/km

Energy Economy
★ ★ ☆ ☆ ☆ ☆
Annual fuel cost of \$3,780
9.7L per 100km

Cost per year is an estimate based on diesel price of \$2.00 per litre and an average distance of 14000 km. Includes Road User Charges (RUC). Emissions and Energy Economy figures standardised to 3P WLTP.

Stock ID: 30067



Trade In Clearance | Phone 04 566 6484 | Email sales@tradeinclearance.co.nz
125-127 Gracefield Road, Lower Hutt 5010, New Zealand
www.tradeinclearance.co.nz