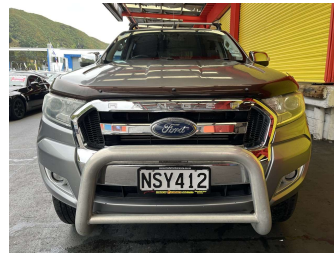


# 2016 Ford Ranger XLT DOUBLE CAB W/S A



Purchase Price

**\$19,995**

Includes GST, Registration & Licensing

Finance may be available on this vehicle. Ask one of our friendly staff for more information.

Gain peace of mind with Mechanical Breakdown Insurance. **Ask us how.**

## Top features

- » ABS Brakes
- » Air Bag(s)
- » Alloy Wheels
- » Body Kit (Factory)
- » Bullbar
- » Canopy
- » EFI
- » Electric Windows
- » Parking Sensors
- » Power Steering
- » Radio
- » Reversing Camera
- » Roof Rack
- » Running Boards
- » Steering wheel control...
- » Tints
- » Tuf Dek
- » Turbo Charger

Body Style

**4 door, Ute**

Odometer

**246,021 km**

Engine

**3198 cc, Internal Combustion**

Fuel Type

**Diesel**

Transmission

**Automatic, Rear Wheel**

Wheels

-

VIN

**MNAUMFF50GW588909**

Interior

**Charcoal, Cloth**

Safety



Based on 2025 VSRR rating

Reg No.

**NSY412**

Ext Colour

**Grey**

History

**NZ New**

Seats

**5 seats**

CO2 Emissions

★ ★ ☆ ☆ ☆ ☆

**257 grams/km**

Energy Economy

★ ★ ☆ ☆ ☆ ☆

**Annual fuel cost of \$3,780**

**9.7L per 100km**

Cost per year is an estimate based on diesel price of \$2.00 per litre and an average distance of 14000 km. Includes Road User Charges (RUC). Emissions and Energy Economy figures standardised to 3P WLTP.

**Stock ID: 30067**



Trade In Clearance | Phone 04 566 6484 | Email sales@tradeinclearance.co.nz  
125-127 Gracefield Road, Lower Hutt 5010, New Zealand  
www.tradeinclearance.co.nz