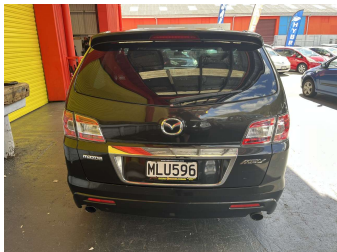
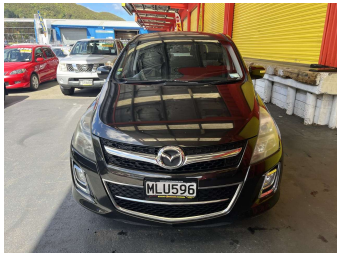
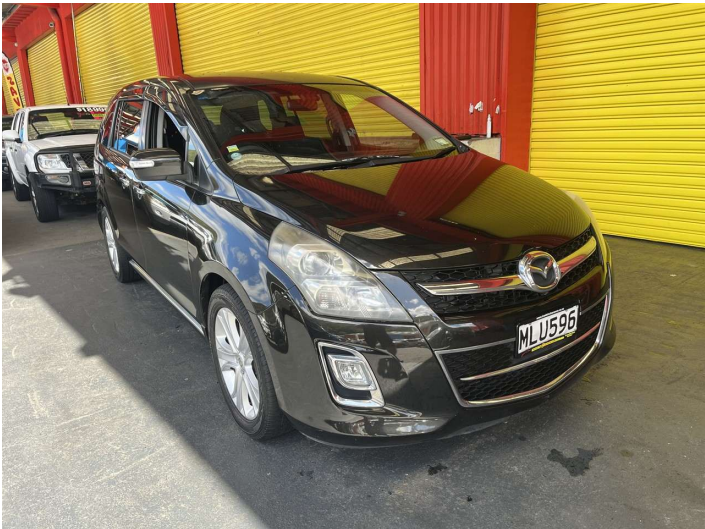


# 2009 Mazda MPV



## Purchase Price

Includes GST, Registration & Licensing

**\$8,995**

Finance may be available on this vehicle. Ask one of our friendly staff for more information.

Gain peace of mind with Mechanical Breakdown Insurance. **Ask us how.**

## Top features

- » ABS Brakes
- » Air Bag
- » Alloy Wheels
- » Power Steering
- » Smart key
- » Turbo Charger

### Body Style

**5 door, People Movers**

### Odometer

**176,949 km**

### Engine

**2260 cc, Internal Combustion**

### Fuel Type

**Petrol**

### Transmission

**Automatic, Front Wheel**

### Wheels

-

### VIN

**7AT0C11EX19213637**

### Interior

-

### Safety



Based on 2024 VSRR rating

### Reg No.

**MLU596**

### Ext Colour

**Black**

### History

**Ex-Overseas**

### Seats

**8 seats**

### CO2 Emissions

★ ★ ☆ ☆ ☆ ☆

**260 grams/km**

### Energy Economy

★ ☆ ☆ ☆ ☆ ☆

**Annual fuel cost of \$4,230  
10.8L per 100km**

Cost per year is an estimate based on petrol price of \$2.80 per litre and an average distance of 14000 km. Emissions and Energy Economy figures standardised to 3P WLTP.

**Stock ID: 29259**



Trade In Clearance | Phone 04 566 6484 | Email [sales@tradeinclearance.co.nz](mailto:sales@tradeinclearance.co.nz)  
125-127 Gracefield Road, Lower Hutt 5010, New Zealand  
[www.tradeinclearance.co.nz](http://www.tradeinclearance.co.nz)