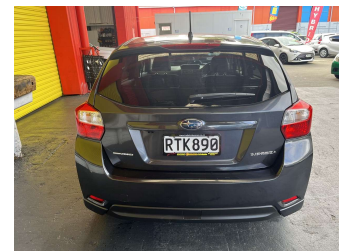


2012 Subaru Impreza 2.0P AWD



Purchase Price **\$9,995**
Includes GST, Registration & Licensing

Finance may be available on this vehicle. Ask one of our friendly staff for more information.

Gain peace of mind with Mechanical Breakdown Insurance. **Ask us how.**

- Top features**
- » ABS Brakes
 - » Air Bag(s)
 - » Alloy Wheels
 - » Body Kit (Factory)
 - » EFI
 - » Electric Windows
 - » Fog Lights
 - » Power Steering
 - » Push Start Button
 - » Radio
 - » Rear Wiper
 - » Roof Spoiler
 - » Smart key
 - » Steering wheel control...
 - » Tints

Body Style
5 door, Hatchback

Odometer
135,270 km

Engine
1990 cc, Internal Combustion


Fuel Type
Petrol

Transmission
Automatic, All Wheel Drive

Wheels
-

VIN
7AT0GF09X21007594

Interior
Black, Cloth

Safety

Based on 2025 UCSR rating for 12-16 models

Reg No.
RTK890

Ext Colour
Grey

History
NZ New

Seats
5 seats

CO2 Emissions
★★★★☆
163 grams/km

Energy Economy
★★☆☆☆☆
Annual fuel cost of \$2,740
7L per 100km

Cost per year is an estimate based on petrol price of \$2.80 per litre and an average distance of 14000 km. Emissions and Energy Economy figures standardised to 3P WLTP.

Stock ID: 30083



Trade In Clearance | Phone 04 566 6484 | Email sales@tradeinclearance.co.nz
125-127 Gracefield Road, Lower Hutt 5010, New Zealand
www.tradeinclearance.co.nz