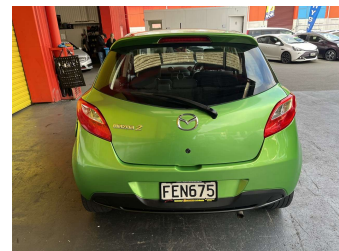
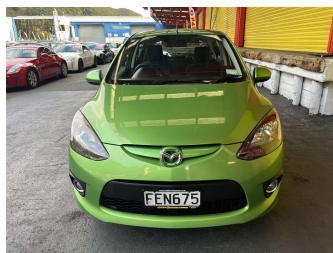
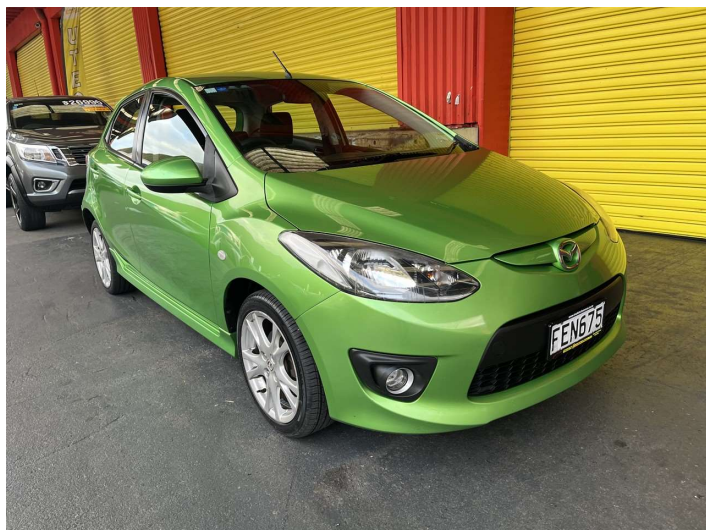


2009 Mazda 2 Classic 1.5 M5



Purchase Price

\$6,995

Includes GST, Registration & Licensing

Finance may be available on this vehicle. Ask one of our friendly staff for more information.

Gain peace of mind with Mechanical Breakdown Insurance. **Ask us how.**

Top features

- » Air Bag(s)
- » Alloy Wheels
- » Body Kit (Factory)
- » EFI
- » Electric Windows
- » Fog Lights
- » Push Start Button
- » Radio
- » Rear Wiper
- » Roof Spoiler
- » Steering wheel control...

Body Style

5 door, Hatchback

Odometer

223,202 km

Engine

1498 cc, Internal Combustion

Fuel Type

Petrol

Transmission

Manual, Front Wheel

Wheels

-

VIN

JM0DE10Y1A0146503

Interior

Charcoal, Cloth

Safety



Based on 2025 UCSR rating for 07-14 models

Reg No.

FEN675

Ext Colour

Green

History

NZ New

Seats

5 seats

CO2 Emissions

★★★★☆

171 grams/km

Energy Economy

★★☆☆☆☆

**Annual fuel cost of \$2,780
7.1L per 100km**

Cost per year is an estimate based on petrol price of \$2.80 per litre and an average distance of 14000 km. Emissions and Energy Economy figures standardised to 3P WLTP.

Stock ID: 30304



Trade In Clearance | Phone 04 566 6484 | Email sales@tradeinclearance.co.nz
125-127 Gracefield Road, Lower Hutt 5010, New Zealand
www.tradeinclearance.co.nz