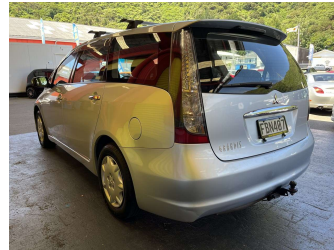


2006 Mitsubishi Chariot GRANDIS



Purchase Price **\$6,995**
Includes GST, Registration & Licensing

Finance may be available on this vehicle. Ask one of our friendly staff for more information.

Gain peace of mind with Mechanical Breakdown Insurance. **Ask us how.**

- Top features**
- » ABS Brakes
 - » Air Bag(s)
 - » Body Kit (Factory)
 - » EFI
 - » Electric Windows
 - » Power Steering
 - » Radio
 - » Rear Wiper
 - » Roof Rack
 - » Roof Spoiler
 - » Tow Bar
 - » Wheel Covers

Body Style
5 door, People Movers

Odometer
192,662 km

Engine
2370 cc, Internal Combustion

Fuel Type
Petrol

Transmission
Automatic, Front Wheel

Wheels
-

VIN
7A8CJ100709205349

Interior
Blue-Grey, Cloth

Safety



Based on 2025 VSRR rating

Reg No.
FBN407

Ext Colour
Silver

History
Ex-Overseas

Seats
7 seats

CO2 Emissions
★ ★ ★ ☆ ☆ ☆
237 grams/km

Energy Economy
★ ☆ ☆ ☆ ☆ ☆

Annual fuel cost of \$3,880
9.9L per 100km

Cost per year is an estimate based on petrol price of \$2.80 per litre and an average distance of 14000 km. Emissions and Energy Economy figures standardised to 3P WLTP.

Stock ID: 29616



Trade In Clearance | Phone 04 566 6484 | Email sales@tradeinclearance.co.nz
125-127 Gracefield Road, Lower Hutt 5010, New Zealand
www.tradeinclearance.co.nz