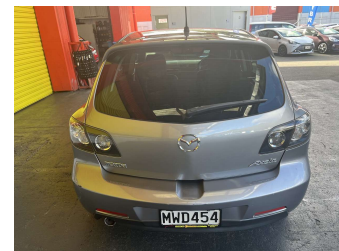


# 2004 Mazda Axela 2.0l Petrol



**Purchase Price** **\$6,995**  
Includes GST, Registration & Licensing

Finance may be available on this vehicle. Ask one of our friendly staff for more information.

Gain peace of mind with Mechanical Breakdown Insurance. **Ask us how.**

- Top features**
- » ABS Brakes
  - » Air Bag(s)
  - » Alloy Wheels
  - » Body Kit (Factory)
  - » EFI
  - » Electric Windows
  - » Fog Lights
  - » Power Steering
  - » Radio
  - » Rear Wiper
  - » Roof Spoiler
  - » Steering wheel control...
  - » Tints

Body Style  
**5 door, Hatchback**

Odometer  
**167,327 km**

Engine  
**1990 cc, Internal Combustion**

Fuel Type  
**Petrol**

Transmission  
**Automatic, Front Wheel**

Wheels  
-

VIN  
**7AT0C13JX13200442**

Interior  
**Grey**

Safety



Based on 2025 UCSR rating for 03-09 models

Reg No.  
**MWD454**

Ext Colour  
**Silver**

History  
**NZ New**

Seats  
**5 seats**

CO2 Emissions  
**★ ★ ★ ☆ ☆ ☆**  
**213 grams/km**

Energy Economy  
**★ ☆ ☆ ☆ ☆ ☆**  
**Annual fuel cost of \$3,490**  
**8.9L per 100km**

Cost per year is an estimate based on petrol price of \$2.80 per litre and an average distance of 14000 km. Emissions and Energy Economy figures standardised to 3P WLTP.

**Stock ID: 30409**



Trade In Clearance | Phone 04 566 6484 | Email sales@tradeinclearance.co.nz  
125-127 Gracefield Road, Lower Hutt 5010, New Zealand  
www.tradeinclearance.co.nz